



About Acme Portable Machines

Founded in 1994, Acme Portable has been supporting the needs of the US Military and Prime Contractors with MIL-STD spec ruggedized portable computing and display solutions for decades.

We pride ourselves in building rugged systems that are thoroughly tested to meet the toughest requirements. Our portable solutions are designed to be fully configurable with additional PCIe slots, large storage capacity, and multiple displays. We are constantly increasing the capabilities of our portable computing solutions to meet increasingly challenging workloads in harsh environments.

CONTACT US

Acme Portable Machines, Inc.

1330 Mountain View Circle
Azusa, CA 91702 USA

Phone: (626) 610-1888

Email: sales@acmeportable.com

www.acmeportable.com



Acme Portable Computer GmbH

Benzstraße 15
76185 Karlsruhe, Germany

Phone: +49 (0) 721-570 453-0

Email: info@acmeportable.de

www.acmeportable.de



MISSION-CRITICAL RUGGEDIZED PORTABLE COMPUTING SOLUTIONS



Acme Portable Machines

30 YEARS IN BUSINESS

SINCE

Sept 26, 1994 Acme Headquarters

June 13, 1997 Acme Taiwan | July 12, 2006 Acme Germany



Sep 26
1994

Acme Headquarters
Established

Acme was founded in the U.S. in 1994 with a vision to deliver portable, high-performance computing solutions tailored for industrial and field applications. This strategic focus on durability and flexibility laid the groundwork for Acme's emergence as a leader in the portable technology sector.

Jun 13
1997

Acme Taiwan
Established

In 1997, Acme expanded to Taiwan to tap into the Asian market, strengthening its global supply chain and fostering local innovation. This marked a significant step in Acme's global growth.

Jul 12
2006

Acme Germany
Established

In 2006, Acme established its European headquarters in Germany to better support the expanding European market. This move strengthened Acme's global reach and reaffirmed its commitment to providing cutting-edge portable solutions to customers worldwide.



pride for all that we've accomplished. Our success is a testament to the passion, expertise, and dedication of our incredible team, who continually push the limits of technology to meet the evolving needs of our customers. We're also immensely grateful to our trusted partners and loyal customers, whose support has been instrumental in our growth and success.

But we're not stopping here. With the same spirit of innovation that has driven us from day one, Acme Portable is ready to embrace the future. We are committed to continuing our legacy of excellence, delivering cutting-edge solutions that empower our clients to excel in their respective fields. As the industry evolves, we are also poised to leverage advancements in artificial intelligence, cloud computing, and cybersecurity to further enhance our offerings and capabilities. Together, we will continue to break new ground, setting the standard for the next generation of portable computing systems.

Here's to the next chapter of Acme Portable—where innovation knows no bounds, and success is built on a foundation of hard work, collaboration, and unwavering commitment to excellence. Thank you for being part of our journey. We look forward to many more years of pushing the limits of what's possible!

For more than three decades, Acme Portable has proudly stood at the forefront of designing and manufacturing the most advanced portable computing solutions in the world. What began as a small endeavor has grown into a global leader in high-performance, rugged, and versatile computing technologies. Throughout our journey, we have continuously pushed the boundaries of innovation, delivering products that set new standards in reliability, durability, customization, and customer satisfaction across various sectors.

Our portable systems are engineered for the most demanding applications across various industries. Whether it's digital media production, live broadcasting, military operations, government projects, or industrial applications, our products are designed to withstand the toughest environments while ensuring top-tier performance. Each system is meticulously crafted to meet the specific requirements of our diverse clientele, providing unparalleled functionality and adaptability.

As we reflect on the past 30 years, we are filled with

Acme's Global Milestones

Charting Success Across Continents

Rugged | Deployable | Workstations & Servers

High-Performance | Mission Specific | Displays

Performance Hardware For Mission Critical Applications

Proudly Made In The USA

Table of contents

01 Quality2 a. Quality Assurance- ISO 9001	08 Portable KVM.....53 a. Portable keyboard, video, and mouse (KVM) solutions
02 Markets and Applications.....3 a. Versatile Solutions for Specialized Applications	09 Portable Rugged Display.....57 a. Robust display solutions designed for harsh environments b. Rugged display solutions
03 Why Acme Portable.....5	10 Portable Transit Case.....63 a. Custom transit cases
04 Partners and Customers.....7	11 Rackmount Flight Case Displays.....65
05 Product Graphics.....9 a. Quality Assurance- ISO 9001	12 Rackmount Solution.....67 a. High-performance rackmount servers and displays b. Rugged rackmount servers c. Rackmount displays
06 Portable AI Solution.....17 a. AI video processing and analysis b. Advanced AI-Powered Video Solutions	13 Rackmount KVM.....69 a. Portable keyboard, video, and mouse (KVM) solutions
07 Portable Systems.....23 a. High-performance portable workstations b. Rugged multi-display workstations c. Rugged high density workstations d. Rugged portable workstations	14 Portable & Rackmount Interface and Power cables.....73 a. Interface and power cables
	15 Custom Designs..... 75



Quality Assurance ISO 9001

Ensuring Mission-Critical Reliability and Performance

01 Quality



ISO 9001 Certified for Unmatched Quality

Our ISO 9001 certification ensures we meet the rigorous quality standards of the defense and industrial sectors, delivering durable and reliable equipment for mission-critical applications.

Built to Perform in Harsh Conditions

We craft products to endure extreme environments, offering customizable features like dustproofing, waterproofing (IP ratings), and shock resistance. Each product undergoes rigorous testing, ensuring consistent reliability and superior performance in even the harshest conditions.

Tailored Solutions with Military-Grade Standards

Our products meet military standards and are designed for future-proof integration and seamless upgrades, providing reliable solutions in the toughest operational environments.

Continuous Quality and Innovation

Our commitment to excellence is reinforced by ISO 9001, ensuring efficient production, strict inspections, and high-performance products for demanding industries. Choose us for reliability and innovation.

James Cheng
Managing Director



Acme Portable is an industry-leading manufacturing company that specializes in rugged portable computers. We strive to achieve the power and configurability of a desktop with the convenience and portability of a laptop. It is a powerful system that combines the best of both worlds – a solution that you can deploy at any location.

Our computers are used for a variety of special applications, and our knowledgeable staff are ready to assist you in any possible way. They will understand the challenges you may face, know which unit you will need, which hardware should be integrated, and which 3rd party cards should be installed.

They work with you throughout the entire process to help you get exactly what you need. The list below shows a few of the markets and applications where our computers are being used.

Markets and Applications

Versatile Solutions for Specialized Applications

Government & Military

Flexible Platforms for Accurate, Real-Time Testing

ACME Portable has decades of experience providing Mil-Spec ruggedized portable computing and display solutions to the US Military and Prime Contractors. We specialize in three key military platforms:

- C4ISR (Command, Control, Communications, Computers, Intelligence, Surveillance, and Reconnaissance)
- Test and Measurement (TM)
- Virtual Training Applications

Our rugged portable computers are designed to operate reliably in extreme environments, from harsh temperatures to rough terrains. Built to exceed military standards, they ensure secure communication, real-time data processing, and seamless interoperability in the field. These systems support tactical command centers and reconnaissance missions.

Our solutions offer modular configurations for mission-specific needs. Whether for data encryption, high-speed computing, or satellite communications, our technology enhances decision-making in critical scenarios.

Test & Measurement

Rugged Platforms Built for Government and Military Excellence

We build rugged, high-performance portable workstations for test and measurement applications, ideal for network professionals requiring real-time data capture with substantial storage and fast write performance. Our platforms support 20G/40G/100G network capture for telecom carriers and 1G/10G for enterprises, using high-speed RAID cards and swappable HDD/SSD for flexible storage.

Our solutions address network deployment, performance monitoring, troubleshooting, and security monitoring. These workstations are essential for industries managing 5G networks, IoT, and large-scale data transmission, providing the precision and reliability needed for telecom, aerospace, and other sectors.

ACME's platforms are designed for scalability, adapting to evolving standards and increasing data demands. With real-time processing power and modular flexibility, they simplify even the most complex network tasks.



” WHY ACME PORTABLE

With over 20 years of industry experience, we are committed to delivering top-quality, custom-built portable solutions.

”

03

Software Flexibility

We recognize that each client has unique operational requirements. Our wide range of customization options allows us to design systems tailored to your specific needs, whether it's for secure environments or extreme conditions. From rugged designs to customized software interfaces, we collaborate closely with you to ensure optimal integration into your workflows and maximize efficiency.

Extended Product Life Cycle

Our systems are engineered to withstand the toughest environments and ensure long-term durability. With a lifecycle-focused approach, we provide support and maintenance that keep your systems running at peak performance for years. This not only minimizes downtime but also protects your investment by extending the product's useful life.

Software Flexibility

Our software solutions offer flexibility for various industry applications, ensuring seamless integration between hardware and software. Whether you need standard functionality or custom development, we provide the tools and resources to meet your requirements, ensuring smooth workflows and adaptability as your needs evolve.

Proven Track Record

ACME Portable has built a solid reputation through years of delivering reliable, high-performance portable systems. Our products are trusted by top-tier clients across multiple industries, from defense to media production. With continuous feedback and refinement, we ensure our solutions not only meet but exceed industry standards.

At ACME Portable, we are committed to delivering solutions that not only meet but exceed client expectations. Our dedication to innovation drives us to continuously improve our products, ensuring they are equipped with the latest technology and features. With a focus on customer satisfaction, we prioritize your specific needs and challenges, creating a partnership that fosters mutual success. Trust ACME Portable for high-quality systems that enhance performance and support your mission objectives.

Our solutions are designed to withstand the toughest environments and meet the highest industry standards, ensuring reliability when it matters most. From military-grade rugged systems to advanced portable workstations, every product is built to empower you with seamless operation, no matter the challenge. We understand that your mission-critical tasks demand nothing but the best, and that's why we constantly push the boundaries of innovation, so you stay ahead. Experience a new level of performance with ACME Portable—where your success is our priority, and we deliver results you can count on.

US Headquarters
1330 Mountain View Circle,
Azusa, CA 91702, U.S.A.



intel

AMD

nvidia

Microsoft

Red Hat



Customers

Our global customer base spans various industries, trusting us to deliver reliable and customized solutions that meet their unique requirements.

Collaborating for Success

Shaping the Future Together



Global Reach,
Trusted Solutions

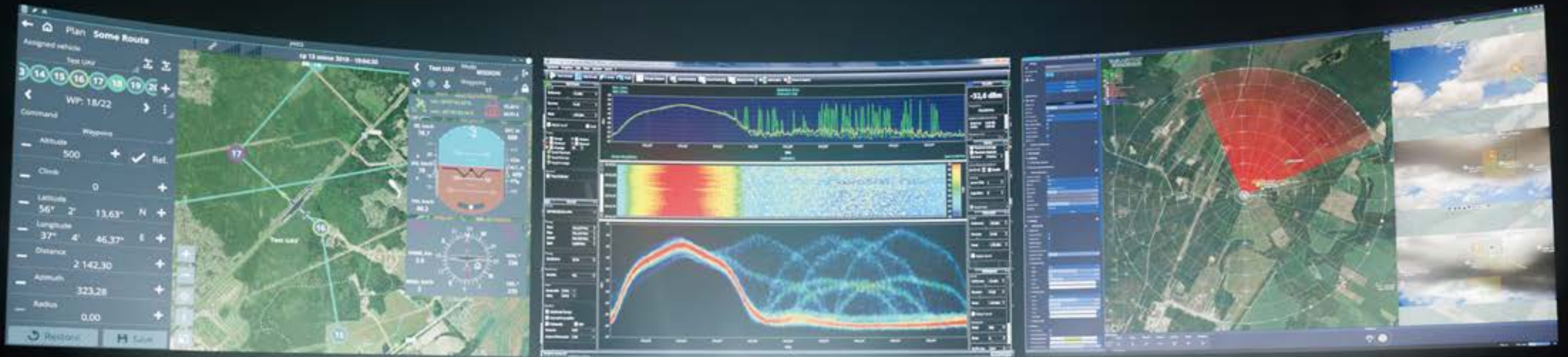
Driving Excellence Worldwide

Partners in Progress

Partners

We work with top-tier technology partners to provide innovative and high-performance solutions, ensuring we stay at the forefront of industry advancements.

04



05



NotePAC III pro V

System with 17.3" FHD or UHD 144Hz displays
with HDMI ports for projectors

MegaPAC L2

System with
23.8" FHD or UHD displays



FlexPAC L3

System with
18.5" FHD or UHD displays



BCCD 270

with 27" FHD or UHD displays



UNLEASHING EDGE COMPUTING SOLUTIONS

Market	Applications	Use Cases
Defense Market	<p>The defense industry needs reliable, high-performance edge computing for real-time data processing in command centers, battlefields, and surveillance.</p> <p>Provides up to 700TOPS of edge computing, handling multiple data streams with ultra-low latency over long distances.</p>	<ul style="list-style-type: none"> » Mobile Command Centers: <ul style="list-style-type: none"> - Real-time AI recognition of vehicles, ships, or drones, providing radar-based alerts for rapid defense response. » Real-time AI Deep Learning: <ul style="list-style-type: none"> - Initiates deep learning-based tracking and engagement strategies once a threat is identified. » 10G Lossless Transmission: <ul style="list-style-type: none"> - Fiber optic transmission with ultra-low latency and lossless 4K60p data flow, covering up to 20km.
Industrial Market	<p>In industrial markets, the demand for robust data handling and real-time processing continues to grow. Acme Portable's edge computing systems provide a scalable and reliable solution for industries that rely on constant data streams and fast decision-making.</p>	<ul style="list-style-type: none"> » Data Processing and Monitoring: <ul style="list-style-type: none"> - Efficiently handle large volumes of data with minimal latency across multiple screens in high-stakes industrial settings. » Generative AI for Scenario Analysis: <ul style="list-style-type: none"> - Helps clients build databases to recognize complex scenarios like fires or falling debris, ensuring proactive safety measures. » Advanced AI Planning: <ul style="list-style-type: none"> - Provides quick retrieval of specific data for decision-making, improving operational efficiency.

- » Customizable Solutions: Acme Portable offers hardware customization, ensuring our systems meet the specific requirements of defense and industrial clients.
- » Extended Product Life Cycle: Our products are built to last, support long-term operations.
- » Software Flexibility: We provide SDK resources for clients who prefer to develop their own software, as well as full software development services for complete turnkey solutions.



Advanced AI-Powered Video Solutions

Real-Time Intelligence for Mission-Critical Operations

06
Portable
Artificial Intelligence(AI)
Solution



NOTEPAC III A6

Acme Portable's edge computing solutions are designed for mission-critical applications where high performance, durability, and reliability are essential. The NotePAC III A6 is meticulously engineered to meet the stringent demands of the defense and industrial markets, offering superior capabilities that ensure fast, secure, and dependable data transmission and processing, even in the most complex and challenging environments. Its robust architecture and optimized processing power allow it to perform seamlessly under pressure, ensuring that users can rely on it for critical operations.

The portability of our edge computing platform makes it ideal for deployment in various field operations, providing flexibility for teams that need to move quickly without sacrificing performance. Built to handle multi-screen setups, high data throughput, and real-time operations, the NotePAC III A6 ensures seamless integration of hardware and software. This portability, combined with its high-performance features, empowers industries to enhance operational efficiency and situational awareness wherever needed, making it a truly adaptable solution.

Specs:

- » Up to four 17.3" FHD or UHD displays
- » iGPU:
 - 2048-core NVIDIA Ampere (64 Tensor Cores)
 - 10752-core NVIDIA Ampere (336 Tensor Cores)
- » CPU: 12-core Arm Cortex A78AE
- » Memory: 64 GB LPDDR6
- » Storage: 64 GB eMMC5.1
- » Linux OS
- » 4CH SDVoE card (IP)
- » Backlit keyboard



Options:

- » 4K 10G frame grabber
- » 4K SDI/HDMI/DVI frame grabber (No IP)
- » 10G transmitter box
- » 10G controller box
- » SDK Video and API
- » Transit case
- » customization available
- » Custom I/O

Features:

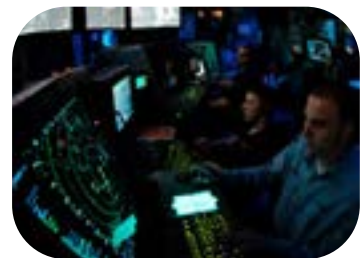
- » Edge computing power up to 700 TOPS, enabling multi-screen remote control and configuration
- » Mobile command center with AI high-performance edge server computing
- » 10G 4K60p lossless, ultra-low latency transmission with up to 20km fiber optic range
- » Supports multi-input connections (SDI/HDMI/DVI/VGA) and simultaneous display with AI computations
- » Design Requirements:
 - High-performance AI processing
 - Enhanced I/O throughput (up to 100 Gb/s)
 - Optional dGPU for extra compute power
 - 10-year enterprise software maintenance for AI Stack and OS

Efficient Edge Computing Integration

Connecting Devices and Systems for Real-Time Operations



Camera



Source 1



Source 2

Multi Video
HDMI\SDI\DP\VGA\CVBS...



HDMI2.0 to SDVoE V2



12G SDI to SDVoE V2



SDVoE to DP V2



AIO to SDVoE V2

SDVoE Encoder / Converter

Fiber\Cooper
Fiber\Cooper



SDVoE Controller
with
SDVoE Capture Card



10G Switch

Fiber\Cooper
Fiber\Cooper

06
Portable
Artificial Intelligence(AI)
Solution



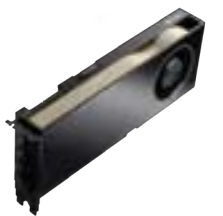
4x FHD60 17.3" Display



NVIDIA IGX Orin 700



4CH SDVoE
Capture Card



NVIDIA
RTX™ A6000

Multi-Source Video Inputs

Compatible with various input sources, ensuring broad adaptability in complex operations

SDVoE Encoder/Converter

Enable smooth, low-latency video transmission across fiber or copper networks, ensuring real-time data flow for critical operations.

10G Networking & Video Capture

Utilize a 10G switch for ultra-fast data transmission, combined with SDVoE controllers and capture cards to deliver seamless, low-latency video streaming and processing.

High-Performance Computing

Powered by NVIDIA IGX Orin 700 and RTX A6000, this multi-display system with a 4-channel SDVoE capture card delivers advanced computing and AI capabilities for demanding applications.

Rugged Multi-Display Workstations

NotePAC III Lite with integrated batteries



07

Portable Systems

NOTEPAC III LITE WITH BATTERIES



The NotePAC III Lite is our triple screen portable computer equipped with a built-in hot-swappable battery, offering seamless power transitions for uninterrupted operation in any environment. Compared to the NotePAC III Pro V, its compact design, along with the integrated battery system, significantly reduces the overall weight. This enhancement boosts portability and ensures users can carry out mission-critical tasks with greater ease and efficiency, making it ideal for professionals on the move.

In addition to its lightweight structure, the NotePAC III Lite combines impressive performance and flexible power options, perfectly suited for high-demand work scenarios. Whether deployed in a command center or operating in the field, it consistently delivers reliable performance, ensuring mission success. With its robust design and adaptable power management, users can confidently tackle complex challenges, knowing their equipment will meet the rigorous.

Specs:

- » Triple 17.3" FHD 144Hz displays
- » CPU:
 - » Spec 1: Intel Core i7-13700E processor
 - » Spec 2: Intel Xeon D-2796NT processor
- » Memory: 64GB DDR4 or up to 512GB LRDIMM with Xeon
- » GPU: Intel UHD Graphic or ASPEED AST2600
- » Expansion Slots: 1x PCIe x 16 slot
- » Storage: 1TB and 2x 2.5" removable drives
- » Battery: 2x 14.4V, 6700mAh battery
- » Dimensions: 17.42" x 13.7" 7.72"



NOTEPAC III LITE WITH BATTERIES

Options:

- » Custom system configuration
- » Single and dual displays versions
- » PNY P2200 or RTX 4000
- » Modular Display Add-On
- » Transit case
- » External battery charging station
- » Customization available
- » Custom I/O

Features:

- » Integrated battery for 1.5+ hour of uninterrupted operation
- » Triple HDMI outputs for display mirroring
- » Compact and lightweight design
- » Hot swap battery

Rugged Multi-Display Workstations

NotePAC III Pro V & NotePAC II Pro V

For mission-critical operations, the NotePAC Pro V series is the ideal deployable command and control center. This system offers a double or triple display configuration suitable for GIS, C6ISR, and other intelligence applications. The triple displays can be easily duplicated via HDMI outputs as required for a command center or combat information center (CIC).

The NotePAC Pro V series is unrivaled in performance and security. Intel Xeon CPUs provide scalable performance and advanced reliability for demanding workloads. Enhance security by upgrading to FIPS 140-2 SSD for full drive hardware encryption. The built-in advanced connectivity options allow for redundancy, failover, and network or device isolation.



NOTEPAC III PRO V



NOTEPAC II PRO V



Features

- » Triple HDMI outputs for display mirroring
- » Dual 10GbE, dual 10GbE SFP+ and quad 1GbE LAN ports
- » Built-in CAC card reader
- » MIL-STD-461 / MIL-STD-810G / MIL-STD-901E

Options

- » Custom system configuration
- » Modular Display Add-On
- » Battery Expansion Pack
- » Transit case
- » Customization available
- » Custom I/O

Specs

- » Single, dual or triple 17.3" FHD 144Hz displays
- » CPU: Intel Xeon D-2183IT processor with AST2500
- » Memory: 64GB DDR4 ECC RAM (upgradable to 512GB)
- » GPU: RTX 4000
- » Expansion Slots: 1x PCIe x8
- » Storage: 4x removable 8TB SSD drives
- » Dimensions: 17.42" x 13.7" x 6.1"

Rugged Multi-Display Workstations

17.3" Modular Display Add-On for NotePAC Series

The NotePAC Series can be enhanced with a modular display add-on. This additional display allows for even more screen space and display configurations. This additional display is easy to attach and mounts to the top center of the unit in less than a minute. The increase in screens greatly increases efficiency and productivity. When compared to single-monitor settings, organizations that used two or more displays were able to enhance productivity significantly.

The extra screens are suitable for displaying mission critical applications and for displaying geographic map materials and GIS data.



17.3" MODULAR DISPLAY ADD-ON



NOTEPAC I PRO V WITH 17.3" MODULAR DISPLAY ADD-ON

Features

- » Modular design with a single USB connection
- » Low power consumption
- » Modular display is compatible with all the NotePAC units

Specs

- » 17.3" FHD display
- » 350 nits display
- » 800:1(Typical) Contrast Ratio

Options

- » Touchscreen
- » 1000 nits display
- » Customization available
- » Custom I/O

Rugged Multi-Display Workstations

Battery Expansion Pack for NotePAC Series

The add-on battery expansion pack charges the hot-swappable batteries, and it includes an AC-DC adapter and a power cord.

The charging dock features a DC-input receptacle, six battery slots, and six LEDs for power and charging indicators. Connect the AC-DC adapter cable to the DC-input receptacle and then insert the battery packs into each slot to charge.

After inserting the battery pack in the slot, the LED indicators light up orange when charging. When fully charged, the LED indicators will turn blue.



HOT SWAP BATTERY EXPANSION PACK



**NOTEPAC III PRO V
WITH
HOT SWAP BATTERY EXPANSION PACK**

Features

- » Battery expansion pack provides 2+ hours of uninterrupted power
- » Charge status with LED indicators
- » Battery health management software
- » Safe for air travel or shipment
- » Hot swap battery design
- » Supports high performance system and GPU card
- » Battery expansion pack is compatible with all the NotePAC units

Specs

- » Six 14.4V, 6700mAh / 96.48Wh (DR202S-4S) batteries
- » 600W, 19VDC, 31.6A power adapter
- » Dimensions: 17.3" x 12.06" x 2.66"

Options

- » Battery charging station
- » External Battery charging station
- » Customization available
- » Custom I/O

Rugged Multi-Display Workstations

MegaPAC L1, L2 ,L3 & CR with 23.8" displays

The MegaPAC series is the most powerful portable command and control center in our product lineup. These extended-ATX compatible units can accommodate the latest Dual Xeon Scalable processors, the most advanced GPUs, and have seven full-length expansion slots available. High powered fans cool down the unit efficiently and prevent over heating even while running the most demanding applications. With large 23.8" UHD 1000 nit displays, critical details are easily viewable even in harsh sunlight.

This powerhouse of a system is suitable for C6ISR, training and simulation, UAV ground control, drone/threat detection and as a communications suite. In comparison with the more compact NotePAC series, this full-size series has the space for any configuration imaginable.



MEGAPAC L2



MEGAPAC L3



MEGAPAC L1



MEGAPAC L2 CR

Features

- » High performance and flexible configurability
- » High brightness sunlight readable displays
- » Full sized rugged portable workstation or server
- » Rolling case for easy transport
- » Touchscreen bonding

Options

- » Custom system configuration
- » 1000nits display
- » Touchscreens
- » Transit case
- » Modular Display Add-On
- » Integrated UPS Option
- » Touchscreen OCR bonding
- » Customization available
- » Custom I/O

Specs

- » Single, dual or triple 23.8" FHD or UHD displays
- » CPU: Single or dual Xeon / EPYC CPUs
- » Memory: Up to 4TB 3DS ECC RDIMM, DDR5-5600MT/s
- » GPU: High performance GPU or RTX 6000 Ada
- » Expansion Slots: Up to 7 expansion slots
- » Storage: Open
- » Dimensions:
 - MegaPAC L1: 23.11" x 15.12" x 9.02"
 - MegaPAC L2: 24.58" x 16.31" x 10.56"
 - MegaPAC L3: 22.96" x 16.39" x 11.98"

Rugged Multi-Display Workstations

MegaPAC L2 CR with UPS

The MegaPAC series is the most powerful portable command and control center in our product lineup. These extended-ATX compatible units can accommodate the latest Dual Xeon Scalable processors, the most advanced GPUs, and have seven full-length expansion slots available. High-powered fans efficiently cool the unit, preventing overheating even during demanding applications. With large 23.8" UHD 1000-nit displays, critical details are easily viewable even in harsh sunlight. An integrated UPS power system ensures continuous operation during unexpected power failures.

This powerhouse of a system is suitable for C6ISR, training and simulation, UAV ground control, drone/threat detection and as a communications suite. In comparison with the more compact NotePAC series, this full-size series has the space for any configuration imaginable.



MEGAPAC L2 CR UPS



MEGAPAC L2 CR UPS

Features

- » High brightness sunlight readable displays
- » Full sized rugged portable workstation or server
- » High performance and flexible configurability
- » Rolling case for easy transport
- » Integrated Uninterruptible power supply
- » 20 minutes uninterruptible power

Options

- » Custom system configuration
- » 1000nits display
- » Touchscreens
- » Customization available
- » Custom I/O

Specs

- » Dual 24" WXGA display
- » Intel Xeon processor with 512GB ECC RDIMM
- » High performance RTX A5000 GPU
- » Dual-Boot with Windows and Linux
- » 2x 10GbE connectivity
- » 800W power supply with UPS
- » Dimension: 24.58" x 16.31" x 10.56"

Rugged Multi-Display Workstations

23.8" Modular Display Add-On for MegaPAC Series

The MegaPAC series can be enhanced with a modular display add-on. This additional display allows for even more screen space and display configurations. This easy to attach additional display easily mounts to the top of the center of the unit in less than a minute. The increase in screens greatly increases efficiency and productivity. When compared to single-monitor settings, organizations that used two or more displays were able to enhance productivity significantly.

The extra screens are suitable for displaying mission critical applications and for displaying geographic map materials and GIS data.



MEGAPAC L3 WITH 23.8" ML3 MODULAR DISPLAY ADD-ON



23.8" ML3 MODULAR DISPLAY ADD-ON



Features

- » Modular Display
- » Modular design with USB connection
- » Low power consumption
- » Quick deployment
- » Supports DP and HDMI connections
- » Compatible with:
 - MegaPAC L3: Up to 6 total displays

Specs

- » 23.8" 16:9 UHD display
- » 540 nits for UHD
- » Dimension: 22.58" x 16.38" x 4.78"

Options

- » Custom system configuration
- » Customization available
- » Custom I/O

Rugged Multi-Display Workstations

Compact Rugged MilPAC III Lite

The next generation of the MilPAC III is more compact, user friendly, and powerful. The MilPAC III Lite has triple multi-point touchscreen displays that fold into a compact package without requiring a keyboard for protection. This system has built in HDMI ports on the top of the unit for simple display cloning while on the go. A thoughtfully placed CAC reader on the side of the unit provides secure system access to DoD networks. 2 M.2 slots and 6 2.5" SSD slots provide more than enough storage space for highly sensitive data. The MilPAC III Lite is also compatible with the latest Quadro RTX GPUs and Dual Intel Xeon Scalable processors.

The MilPAC III Lite is suitable as a deployable command and control center for GIS, C6ISR and other intelligence applications.



MILPAC III LITE



MILPAC III LITE WITH OPTIONAL KEYBOARD



Features

- » Multi-point touch screens
- » Triple HDMI outputs for display mirroring
- » Keyboard-less design
- » 6x high capacity removable storage

Options

- » Custom system configuration
- » 1000nits display
- » Rugged Silicone keyboard
- » Customization available
- » Custom I/O

Specs

- » Triple 17.3" FHD 144Hz LED displays
- » CPU: Single or Dual Intel Scalable Xeon processors
- » Memory: Up to 4TB 3DS ECC RDIMM, DDR5-5600MT/s
- » GPU: High performance GPU or RTX 6000 Ada
- » Expansion Slots: 5 expansion slots
- » Storage: open
- » Dimensions: 19.24" x 15.30" x 9.14"

Rugged High Density Workstation

MILPAC SRHD with Rugged Quick Removable drives

The MilPAC SRHD is a portable system for applications requiring high storage capacity. This system is built to sustain multi-gigabit per second recording of network traffic with zero packet drops. Our revolutionary caddy design allows users to remove 4 drives simultaneously for increased convenience and efficiency.

With multiple hard drives, the MilPAC SRHD maximizes storage capacity and ensures data redundancy, making it ideal for high-performance, data-critical applications. Simultaneously recording and storing large volumes of data across multiple drives boosts system efficiency and adds a crucial layer of data security.

Built for cybersecurity and network analysis, the rugged MilPAC SRHD offers exceptional durability in extreme environments. Heavy-duty metal and rubber bumper corners protect the unit from impacts, making it perfect for offsite locations, labs, and military bases.



MILPAC SRHD



MILPAC SRHD

Features

- » 16x Hot-Swappable storage slots for 2.5" SSD
- » Remove storage drives one by one or in sets of fours
- » Rubber bumpers keep the unit protected from vibration and shock
- » Lightweight and compact storage platform
- » MIL-STD-461 / MIL-STD-810G / MIL-STD-901E

Specs

- » 17.3" 16:9 FHD display
- » CPU: Single Xeon
- » Memory: Up to 4TB 3DS ECC RDIMM, DDR5-5600MT/s
- » GPU: High performance GPU
- » Expansion Slots: Up to 5 expansion slots
- » Storage: open
- » Dimensions: 18.0" x 14.5" x 8.25"

Options

- » Custom system configuration
- » 1000nits display
- » Touchscreens
- » Customization available
- » Custom I/O

Rugged High Density Workstation

MILPAC for TOYO



MILPAC SRHD



MILPAC SRHD

Features

- » 16x Hot-Swappable storage slots for 2.5" SSD
- » Remove storage drives one by one or in sets of fours
- » Rubber bumpers keep the unit protected from vibration and shock
- » Lightweight and compact storage platform
- » MIL-STD-461 / MIL-STD-810G / MIL-STD-901E

Specs

- » 17.3" 16:9 FHD display
- » CPU: Single Xeon
- » Memory: Up to 4TB 3DS ECC RDIMM, DDR5-5600MT/s
- » GPU: High performance GPU
- » Expansion Slots: Up to 5 expansion slots
- » Storage: open
- » Dimensions: 18.0" x 14.5" x 8.25"

Options

- » Custom system configuration
- » 1000nits display
- » Touchscreens
- » Customization available
- » Custom I/O

Rugged Portable Workstations

FlexPAC L1 & L3 with 18.5" displays

The FlexPAC series is our legacy system that has withstood the test of time. The latest redesigned FlexPAC is sleeker, more powerful, and more rugged than ever. The FlexPAC supports dual Xeon CPUs and a RTX4080 GPU with 7 expansion slots available. The large 18.5" display is protected by a full size keyboard and touchpad cover. The large handle and rubber bumpers help with making transportation of the unit extremely easy.

This has been one of our top-selling systems, due to its versatility and configurability. Like the name suggests, the FlexPAC is suitable for a wide range of applications. This is an ideal standard sized system, more powerful than the single display NotePAC and more compact than the single display MegaPAC.



FLEXPAC L3



FLEXPAC L1



Features

- » Standard sized rugged portable workstation or server
- » High performance and flexible configurability
- » High performance liquid cooling
- » Wide Temperature Operating Range:
- Operating Temperature: -30 ~ 80 °C

Options

- » Custom system configuration
- » Integrated uninterruptible power supply
- » 1000nits display
- » Touchscreens
- » 1200W power supply
- » Customization available
- » Custom I/O

Specs

- » Single or triple 18.5" FHD displays
- » CPU: Single or dual Xeon / EPYC CPUs
- » Memory: Up to 4TB 3DS ECC RDIMM, DDR5-5600MT/s
- » GPU: High performance GPU or RTX 6000 Ada
- » Expansion Slots: Up to 7 expansion slots
- » Storage: open
- » 850W power supply
- » Dimensions:
» FlexPAC 385 L1: 18.46" x 14.87" x 9.02"
» FlexPAC 385 L3: 18.46" x 14.87" x 9.62"

Rugged Multi-Display Workstations

18.5" Modular Display Add-On for FlexPAC Series

The FlexPAC Series can be enhanced with a modular display add-on. This additional display allows for even more screen space and display configurations. This additional display is easy to attach and mounts to the top center of the unit in less than a minute. The increase in screens greatly increases efficiency and productivity. When compared to single-monitor settings, organizations that used two or more displays were able to enhance productivity significantly.

The extra screens are suitable for displaying mission critical applications and for displaying geographic map materials and GIS data.



18.5" MODULAR DISPLAY ADD-ON



FLEXPAC L3 WITH 18.5" MODULAR DISPLAY ADD-ON

Features

- » Modular Display
- » Modular design with USB connection
- » Low power consumption
- » Quick deployment
- » Wide operating temp
- » Compatible with:
 - FlexPAC L3: Up to 4 total displays

Specs

- » 18.5" 16:9 FHD display
- » Dimension: 17.72" x 12.65" x 2.1"

Options

- » Custom system configuration
- » Customization available
- » Custom I/O

Rugged Portable Workstations

DuraPAC

The DuraPAC product is a robust portable computer built using all aluminum sheet metal to provide tough, go-anywhere unit suitable for tough environments and mobile applications. With the 17.3", HD LCD display and 4-expansion slots design, the DuraPAC can easily fulfill the requirements for digital media related applications in the broadcasting market. The DuraPAC can also be configured with many special add-on cards tailored to your specific unique applications.

Every unit comes equipped with cooling fans and easy access to its expansion slots for immediate system upgrade or maintenance. With its elegant design and rugged construction, the DuraPAC is the most durable and versatile portable platform for your applications.



DURAPAC



DURAPAC

Features

- » Compact and versatile design
- » Cost effective solution for wide range of applications

Options

- » Custom system configuration
- » 1000nits display
- » Touchscreens
- » Customization available
- » Custom I/O

Specs

- » 17.3" 16:9 FHD display
- » CPU: Single Intel Core or Xeon
- » Memory: Up to 4TB 3DS ECC RDIMM, DDR5-5600MT/s
- » GPU: High performance GPU or RTX 6000 Ada
- » Expansion Slots: Up to 4 expansion slots
- » Storage: open
- » Dimensions: 16.50" x 13.62" x 7.25"

Rugged Portable Workstations

DuraPAC Lite

The DuraPAC Lite product is a robust portable computer meticulously built using all aluminum sheet metal, providing a tough, go-anywhere unit that is ideal for harsh environments and demanding mobile applications. Designed for versatility, it features 2-expansion slots, allowing users to customize the system with uniquely designed add-on cards for a wide variety of applications, from advanced data processing to specialized field operations. Despite its durability, the DuraPAC Lite maintains a slim and lightweight profile, fitting comfortably inside an airplane compartment, making it perfect for professionals who require mobility.

The optional touch screen further enhances its usability by eliminating the need for a keyboard, making our slimmest and lightest system even more compact, while offering intuitive operation in space-constrained environments.



DURAPAC LITE



DURAPAC LITE

Features

- » Sub-compact and lightweight design
- » 2 Full length slots for add-in cards

Options

- » Custom system configuration
- » 1000nits display
- » Touchscreens
- » Customization available
- » Custom I/O

Specs

- » 17.3" 16:9 FHD display
- » CPU: Single Intel Core or Xeon
- » Memory: Up to 4TB 3DS ECC RDIMM, DDR5-5600MT/s
- » GPU: Intel UHD Graphic
- » Expansion Slots: 2 expansion slots
- » Storage: open
- » Dimensions: 16.41" x 12.40" x 4.39

Rugged Portable Workstations

TransPAC - Battery Powered System

For added mobility and portability, the TransPAC is a new and unique battery-powered solution. While most of our products are portable because of their compact form factor and light weight, the TransPAC takes it one step further; it is battery-powered.

Supporting a 220W power supply with 4x Li-ion 81Whr battery packs, you can use the TransPAC on the field for extended periods. It comes with a full HD display and can hold up to 16TB of HDD storage or 8TB of SSD storage. It is manufactured from high-strength, low weight aluminum creating a robust, powerful, reliable and ergonomic portable system. Featuring powerful computing elements, this portable can be configured to fulfill many demanding applications, especially for ones that are on the field.



TRANSPAC



TRANSPAC

Features

- » Compact and rugged battery-powered workstation
- » Configurable with the latest Intel Core or AMD processor
- » Hot-swappable Li-ion battery packs

Options

- » Custom system configuration
- » 1000 nits display
- » External battery charging station
- » Customization available
- » Custom I/O

Specs

- » 17.3" FHD display
- » Intel core processor
- » Integrated HD graphic
- » 4x removable batteries
- » Dimensions: 16.46" x 14.46" x 6.96"

Rugged Portable KVM

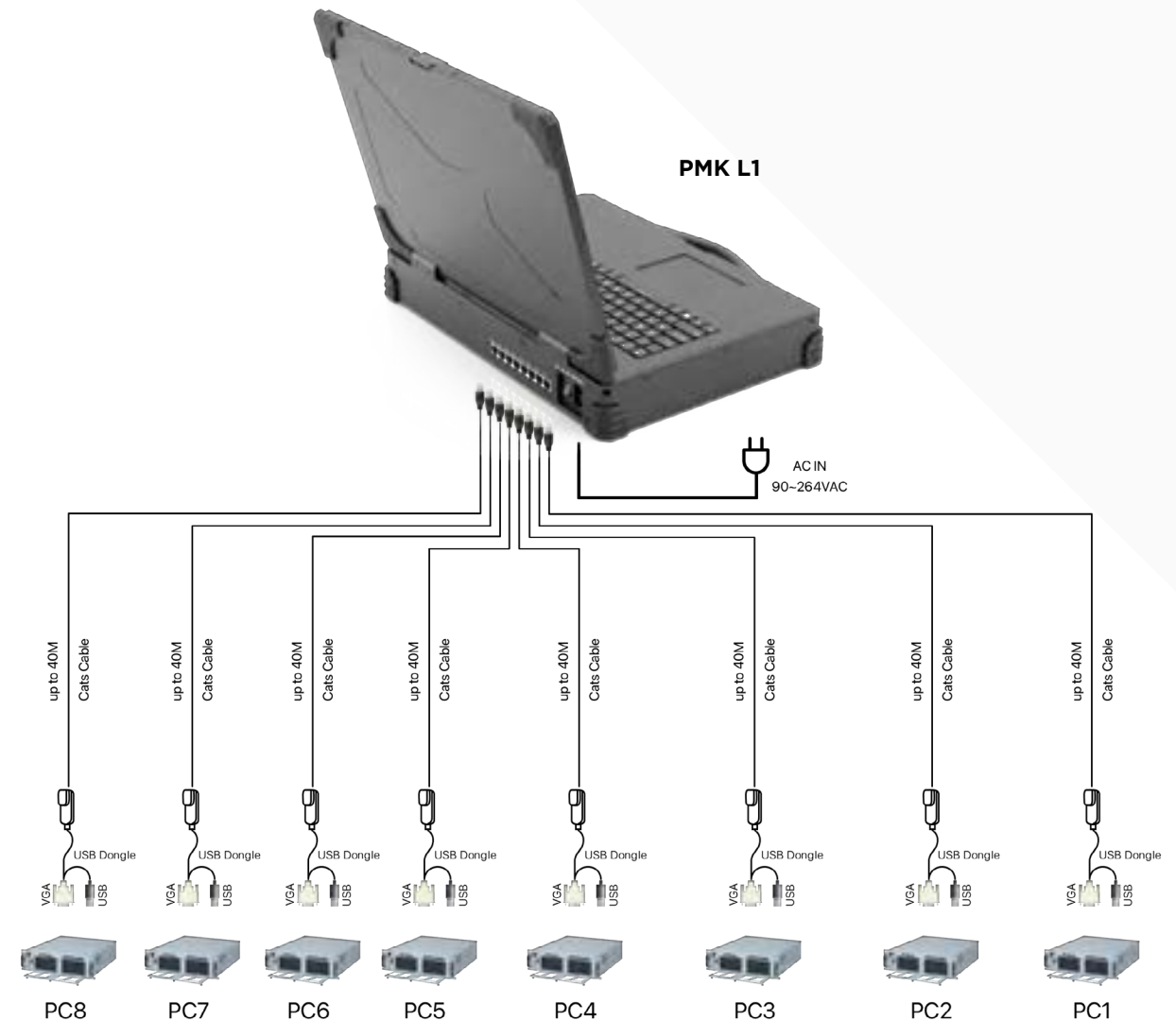
PMK L1 with 8-port KVM

The PMK enables users to access up to eight computers, servers, or KVM switches, offering seamless control in a centralized setup. Set your PMK at a convenient and suitable control field for optimal efficiency. With this unit, you can remotely control systems up to 130 feet away, making it ideal for managing multiple devices in larger spaces.

Designed for use in challenging environments, the PMK is built to withstand harsh conditions while maintaining reliable performance. Its plug-and-play functionality ensures quick and easy setup, allowing you to integrate and manage your devices effortlessly. The PMK allows you to mix and match a variety of sources, providing control of them from one keyboard and one Touch PAD. It supports a wide range of video inputs, including DisplayPort, HDMI, DVI, and VGA, all in Full HD, ensuring compatibility with diverse devices and delivering high-quality visuals. This versatility makes the PMK an indispensable tool for streamlined system management in any environment.



PMK L1



Features

- » Notebook style portable KVM
- » Easy and intuitive operation
- » Control up to 8 remote servers
- » Up to 40 meter of safe and remote operation
- » Battery powered operation

Specs

- » 17.3" 16:9 FHD display
- » 8x RJ-45 style KVM ports
- » Supports VGA, DP, DVI and HDMI video interfaces
- » Dimension: 17.4" x 12.2" x 3.26"

Options

- » Custom system configuration
- » Battery pack
- » DP, DVI, HDMI video interfaces
- » External Battery charging station
- » Swappable battery pack
- » Customization available
- » Custom I/O

Rugged Portable KVM

PMK L3 with 2-port keyboard/mouse switch

The PMK is a robust portable triple LCD display system built using heavy duty metal to provide a tough, go-anywhere unit ideally suitable for wide ranges of applications such as computer-aided design, geographic information systems, and professional digital media applications. Built in a compact, lightweight form factor, the BCCD provides excellent displays for simulation and training applications.

Every PMK comes equipped with three 1920 x 1080 HD resolution LCD displays and multiple independent DVI/VGA/DP inputs. Its independent triple inputs are fully compatible with most high-performance graphics cards.

The PMK LCD display can be expanded and retracted fully for transporting and storage. With its rich features and extra-rugged construction to sustain bumps, it is the most durable and efficient triple display solution for your needs.



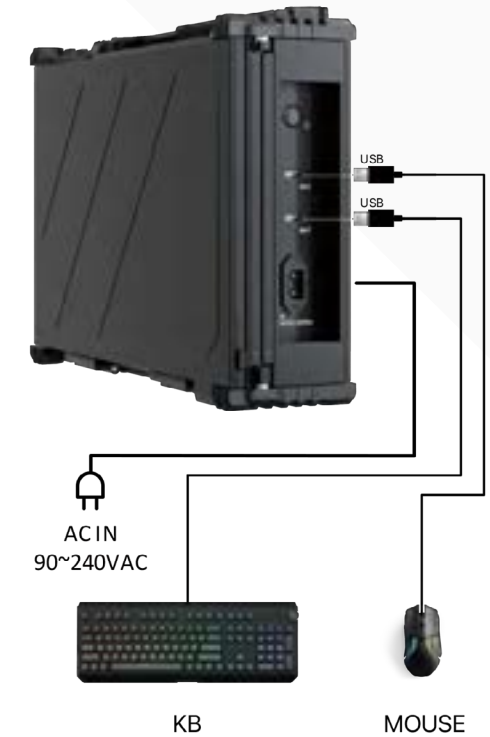
PMK L3



PMK L3 LEFT VIEW



PMK L3 RIGHT VIEW



Features

- » Integrated 2-Channel KVM
- » Compatible with Windows, MAC OS and Linux
- » Battery powered

Options

- » Custom system configuration
- » Supports VGA, DP and HDMI video interfaces
- » 1000nits display
- » Touchscreens
- » Customization available
- » Custom I/O

Specs

- » Triple 17.3" 16:9 FHD displays
- » USB interface
- » 300 nits display
- » 800:1(Typical) Contrast Ratio
- » Dimension: 18.46" x 15.67" x 5.6"
- » Supports VESA mount

Rugged Display Solutions

BCCD 173 with triple 17.3" displays

The Bi-Fold Command and Control Display (BCCD) is an innovative solution that enhances your portable computing setup by allowing you to quickly and efficiently add extra screens. Its compact, lightweight design makes it the perfect companion for your portable workstation or rugged laptop. It fits easily into any environment without adding bulk. The BCCD's adaptability ensures seamless integration with any existing system setup, offering multiple configuration options. You can choose to connect all three screens via a single USB 3.0 connector or use individual HDMI, DVI, VGA, and DP inputs, depending on your needs. Another unique feature that makes the BCCD stand out is that it is battery powered. Easily set up the BCCD anywhere and anytime regardless of power source.

This triple screen display solution is ideal for applications like data analysis, video editing, and high-resolution monitoring, making it perfect for professionals in security, surveillance, and media production who require detailed visuals and expansive workspaces.



BCCD 173



BCCD 173



Features

- » USB Type-C interface
- » Compatible with Box PC and laptops
- » Compatible with Windows, MAC OS and LINUX
- » Battery powered

Specs

- » Triple 17.3" 16:9 FHD displays
- » 300 nits display
- » 800:1(Typical) Contrast Ratio
- » Dimension: 18.46" x 15.67" x 5.6"
- » Supports VESA mount

Options

- » Custom system configuration
- » Supports VGA, DP and HDMI video interfaces
- » 1000nits display
- » Touchscreens
- » Flexible system board
- » DC power supply
- » Flexible drive bay configuration
- » Customization available
- » Custom I/O

Rugged Display Solutions

BCCD 270 with triple 27" displays

The Bi-Fold Command and Control Display (BCCD) is an innovative solution that enhances your portable computing setup by allowing you to quickly and efficiently add extra screens. Its compact, lightweight design makes it the perfect companion for your portable workstation or rugged laptop. It fits easily into any environment without adding bulk. The BCCD's adaptability ensures seamless integration with any existing system setup, offering multiple configuration options. You can choose to connect all three screens via a single USB 3.0 connector or use individual HDMI, DVI, VGA, and DP inputs, depending on your needs. Another unique feature that makes the BCCD stand out is that it is battery powered. Easily set up the BCCD anywhere and anytime regardless of power source.

This triple screen display solution is ideal for applications like data analysis, video editing, and high-resolution monitoring, making it perfect for professionals in security, surveillance, and media production who require detailed visuals and expansive workspaces.



BCCD 270



BCCD 270

Features

- » Connect easily through USB-C, HDMI or DP
- » Compatible with all laptops and notebook systems
- » Rugged design for mobile applications
- » IP 45 Rated rugged displays
- » Battery powered

Specs

- » Triple 27" 16:9 FHD displays
- » 300 nits display
- » 1300:1(Typical) Contrast Ratio
- » Supports DP and HDMI video interfaces
- » Dimension: 26.61" x 19.27" x 7.4"

Options

- » Custom system configuration
- » Supports VGA interface
- » 1000nits display
- » Touchscreens
- » UHD display
- » Battery
- » Support upto 4 displays
- » Customization available
- » Custom I/O

Rugged Display Solutions

18.5" Modular Display Add-On for BCCD 270

BCCD 270 can be enhanced with a 18.5" modular display add-on. This additional display allows for even more screen space and display configurations. This additional display is easy to attach and mounts to the top center of the unit in less than a minute. The increase in screens greatly increases efficiency and productivity.

When compared to single-monitor settings, organizations that used two or more displays were able to enhance productivity significantly. The extra screens are suitable for displaying mission critical applications and for displaying geographic map materials and GIS data.



18.5" MODULAR DISPLAY ADD-ON FOR BCCD 270



BCCD 270 WITH 18.5" MODULAR DISPLAY ADD-ON

Features

- » Modular design with USB connection
- » Low power consumption
- » Dedicated Auto-Switching power supply

Options

- » Supports VGA, DP and HDMI video interfaces
- » 1000nits display
- » Touchscreens
- » Customization available
- » Custom I/O

Specs

- » 18.5" UHD display
- » 350 nits display
- » 1000:1(Typical) Contrast Ratio
- » Dimension: 19.13" x12.53" x2.08"

Portable Transit Case

Hard Transit Case(Optional Upgrade)

Protect each portable workstation in transportation with MIL-STD hard transit cases. These cases are airtight, waterproof, and dustproof, ensuring your equipment stays protected in the toughest conditions. They also come with pressure relief/breather valves to maintain optimal pressure levels. The foam inside the case is laser-cut to the exact dimensions of your product, providing an added protective layer of padding and ensuring a snug fit.

These cases are engineered to withstand extreme temperatures and impacts, making them ideal for harsh environments where durability is crucial.



**CUSTOMIZED SKB TRANSIT CASE
WITH CUSTOM FOAM**



**CUSTOMIZED ZARGES TRANSIT CASE
WITH CUSTOM FOAM**

Features

- » Mil-STD Case
- » Dustproof and Waterproof
- » IP 65 rating
- » Resistant to corrosion and impact damage
- » Custom water-jet cut foam

Options

- » Different foam and material available
- » Custom-cut foam for all your equipment and accessory
- » Customization available

Specs

- » Ultra high strength MIL-STD 810H design
- » Gasket-sealed, water and dust tight, submersible design
- » Resistant to corrosion and impact damage
- » Ultra high strength MIL-STD 810H design
- » Gasket-sealed, water and dust tight, submersible design
- » Resistant to corrosion and impact damage

Rackmount Flight Case Displays

RMSDU, RMDDU, RMTDU

The RMSDU, RMDDU, and RMTDU are our rackmount display units offered in either a single, double, or triple display configuration. Each display system has been thoughtfully designed to be space efficient while not sacrificing screen size and resolution. The displays can be easily transported and set up, then stored away by folding, rotating and sliding into the drawer.

The RMSDU (rackmount single display unit) provides a large 23" display available in a compact 1U rack. The RMDDU (rackmount dual display unit) employs two 16:9 format FHD 1920x1080 LCD displays in a 2U rackmount package only 24" deep. The RMTDU (rackmount triple display unit) is an impressive 3U rackmount with an integrated keyboard drawer and three 19" LCD monitors. Each display has an independent OSD control (power, contrast, brightness, video), allowing independent panel control or control of all panels simultaneously.



RMSDU

RMTDU



RMDDU



Features

- » Displays tilt for easy viewing
- » Backlit keyboard and resistive touchpad
- » Input Options: USB, VGA, DVI-D, or Displayport
- » MIL-STD-461 / MIL-STD-810G
- » Full range power supply
- » Short depth design

Options

- » Custom trackball
- » Customization available
- » Custom I/O

Specs

- » RMSDU: 1U Rack Height; Single 23" FHD 16:9
- » RMDDU: 2U Rack Height; Dual 17.3", 19" or 23" FHD 16:9
- » RMTDU: 3U Rack Height; Triple 17.3", 19" FHD 16:9
- » FHD 16:9 (Optional Touch Screen)
- » Dimension:
- » RMSDU: 1.7" x 17.76" x 31.80"
- » RMDDU: 3.4" x 17.76" x 25.89"
- » RMTDU: 5.1" x 17.76" x 25.80"

Rugged Rackmount Servers

RMS 100, 200 & 300

The RMS series are short-depth, high-performance rugged rack servers. Leveraging the latest commercial technology, these servers have the capacity to process and store large amounts of data efficiently in challenging environments. These rugged edge servers are built for demanding applications, such as AI, security, and tactical workloads in extreme settings.

These rack servers are built to meet MIL-STD specs to withstand shock, vibration, and extreme temperatures. The redundant full range power supply allows users to swap out defective components without any disruptions. With multiple configurations, upgrades, and heights available, there are a variety of options to choose from.



RMS 100



RMS 300



RMS 200



Features

- » Dual Xeon processors
- » MIL-STD-461 / MIL-STD-810G / MIL-STD-901E
- » Redundant full range power supply
- » Short depth design

Options

- » Custom system configuration
- » Flexible system board
- » DC power supply
- » Flexible drive bay configuration
- » Customization available
- » Custom I/O

Specs

- » RMS 100: 1U
 - Intel dual Xeon scalable processors
 - UP to 3TB 3DS ECC RDIMM memory
 - 9 removable 2.5" drives with 2 FH & 1LP slots
 - 800 Watt redundant power supply
- » RMS 200: 2U
 - Intel dual Xeon Scalable processors
 - Up to 768GB ECC RDIMM memory
 - 16+1 removable 2.5" drives with 7 LP slots
 - 800 Watt redundant power supply
- » RMS 300: 3U
 - Intel dual Xeon Scalable processors
 - Up to 2TB 3DS ECC RDIMM memory
 - 24+1 removable 2.5" drives with 7 FH slots
 - 800 Watt redundant power supply
- » Dimension:
 - RMS 100: 1.7" x 18.9" x 20"
 - RMS 200: 3.4" x 18.9" x 19.7"
 - RMS 300: 5.1" x 18.9" x 19.7"

Rackmount KVM

SMK920, 980, 990

The integration of data and video, and voice communication in computers and the subsequent technological advances have spawn many sophisticated CTI applications that have become accessible and affordable to the small and mid-sized business. The increasing CTI applications coupled with the growing demand for corresponding hardware and systems have created a dilemma: How does one pack the growing number of equipment into an existing space?

Acme's 1U slim industrial monitor keyboard, the SMK, is the solution for compacting more computing power into limited space. This revolutionary monitor keyboard combines a spectacular display coupled with a keyboard with built-in pointing device in a compact unit that measures only 1U in height. Occupying a fraction of the space of traditional monitor and keyboard units, the installation of the SMK leaves ample space for other critical components. With built-in analog-to-digital conversion board, the SMK can be connected to any standard VGA graphics card for immediate On Screen Display. The monitor key-board unit has a built-in slide rail and mounts easily onto any 19" rackmount cabinet.



SMK990



SMK920



SMK980



SMK990

Features

- » Slim 1U rack mount LCD console with up to 16x KVM switches
- » Multiple input interfaces including USB and PS2
- » Wide operating temperature range
- » High quality and good performance

Options

- » 1000 nits display with AG and AR coating
- » Integrated resistive touchscreen
- » 3-stage brightness optical sensor
- » Silicone keyboard with touchpad
- » Custom system configuration
- » Custom I/O

Specs

- » 17.3" 1920x1080 resolution
- » 17" and 19" 1280 x 1024 resolution
- » Optical Sensor
- » Dimension:
 - SMK920 HD: 1.7" x 17.42" x 16.1"
 - SMK920: 1.7" x 17.42" x 19.68"
 - SMK980/990: 1.7" x 17.42" x 23.62"

Rackmount KVM

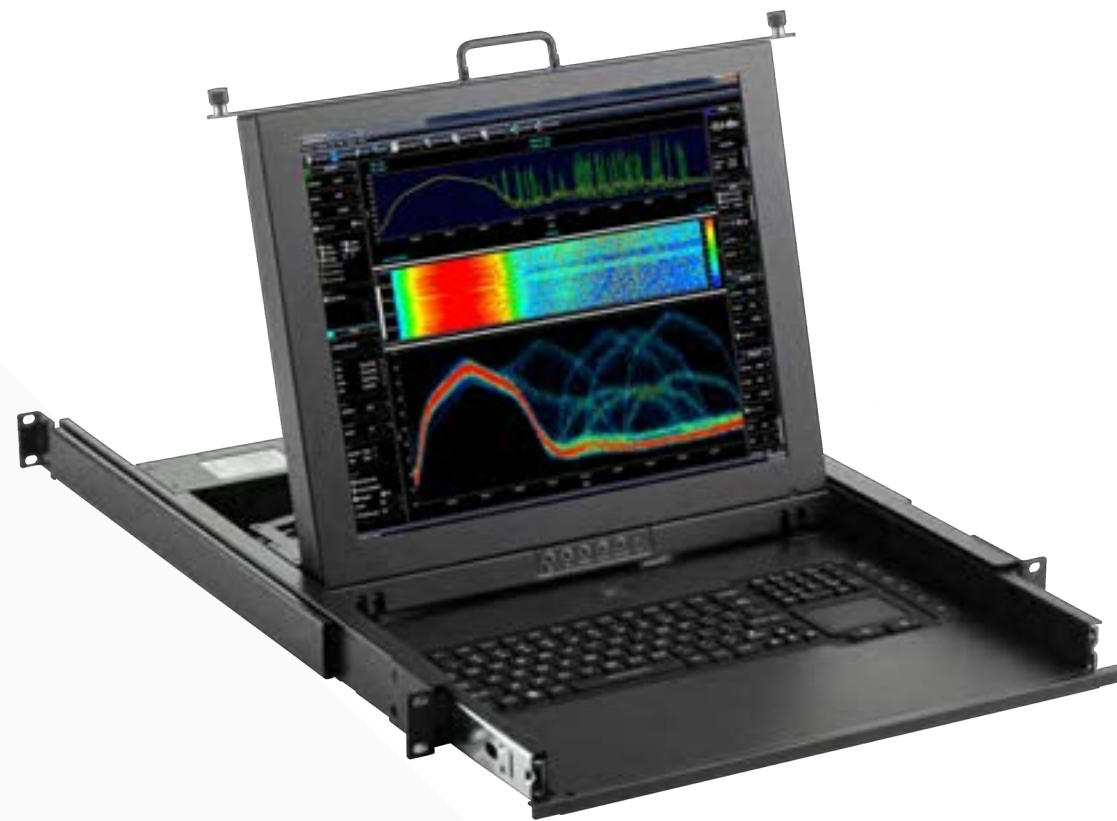
SMK920-17-Rugged

ACME's 1U slim industrial monitor keyboard, the SMK, is the solution for optimizing space while delivering powerful performance. This cutting-edge device is designed to compact more computing power into limited spaces without compromising on functionality. Featuring a sleek design that measures just 1U in height, the SMK integrates a high-resolution, high-brightness display, ensuring clarity and visibility even in challenging lighting conditions.

The unit also includes a full keyboard with a built-in pointing device for ease of use, making it a highly efficient tool for mission-critical applications. To further enhance usability, the SMK is equipped with an optical sensor for precise control, AG/AR coating to reduce glare and reflections, and an intuitive touchscreen interface. Whether you're working in industrial environments or high-demand operations, this revolutionary SMK unit offers the perfect blend of performance, compactness, and durability, making it an essential component for your computing needs.



SMK920-17-RUGGED



SMK920-17-RUGGED

Features

- » Slim 1U rack mount LCD console
- » Integrated resistive touchscreen
- » 3-stage brightness optical sensor
- » Silicone keyboard with touchpad
- » Front side IP rating against grease, dusty and liquid

Specs

- » 17" display at 1280x1024 resolutions
- » 1000 nits display with AG and AR coating
- » Short depth at 18.89" deep.

Options

- » 17" display at 1280x1024 resolutions
- » 1000 nits display with AG and AR coating
- » Short depth at 18.89" deep.
- » Custom system configuration
- » Custom I/O

Interface and Power Cables

Custom interconnecting cables for Acme products and equipments

Acme can also upgrade your system with a wide range ruggedized interfaces, cables, and accessories. These Mil-Spec interfaces and cables comply with MIL-STD-810G and MIL-STD-461F and are intended for use in military and aerospace applications. MIL-Spec cables perform well in applications requiring absolute reliability in physically demanding environments. These customizations are built to withstand even the harshest environments in applications ranging from battlefields and Navy ships to jet fighters.

Cable assemblies are built with EMI overbraid terminated with banding adapters and are protected from abrasion with Gorilla Sleeve. Cable plugs can be supplied with full backshells and/or shrink boots. Continuity and Hi Pot testing is performed on all cables as part of the manufacturing process. For aircraft operations, Teflon wire and LSZH cable jacketing is available. Cable labeling is provided per MIL-STD-130 with a protective over coating.



Features

- » Amphenol connectors
- » High Reliability
- » Field installable & serviceable
- » complete solutions and configurable

Specs

- » 100% compatible with MIL-DTL-38999
- » RoHS compliant

Options

- » Custom I/O

Custom Options

- » Customized to meet environmental, EMC, TEMPEST, Zone 1/2 and other compliance requirements
- » Power Solutions – Battery and UPS Power
- » Display – High brightness & Touchscreen
- » Specialty Connectors – MIL – SPEC
- » Custom Interfaces and Integration
- » Brackets, Mounts and Screws
- » Custom Logo & Color
- » OEM or ODM
- » And More



Our in-house R&D team will take your requirements to design custom solutions, from making modifications to our standard products to creating fully custom systems. Sales engineers are there every step of the way to manage certification requirements, quantity, price, and schedule.

**Not finding the product you are looking for?
Visit our website or contact us today.**

Acme Portable Machines, Inc.
1330 Mountain View Circle
Azusa, CA 91702 USA
Phone: (626) 610-1888
Email: sales@acmeportable.com
www.acmeportable.com

Acme Portable Computer GmbH
Benzstraße 15
76185 Karlsruhe, Germany
Phone: +49 (0) 721-570 453-0
Email: info@acmeportable.de
www.acmeportable.de