

# DLT-V8310/12

## Celeron®



## Fully Configurable VMT Series, Rugged

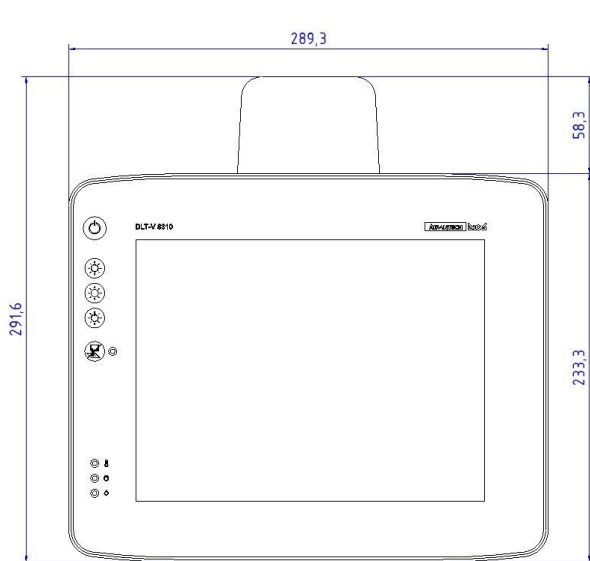
- Intel® Celeron® 2980U Dual Core CPU
- Color-TFT 10" or 12"
- Fully configurable to support individual needs
- Break-proven, abrasion-resistant touchscreen, IK08
- Integrated uninterruptible power supply (UPS)
- Extreme temperature range, cold store capable
- Fully rugged, IP66 and 5M3 for the complete system

## Specification

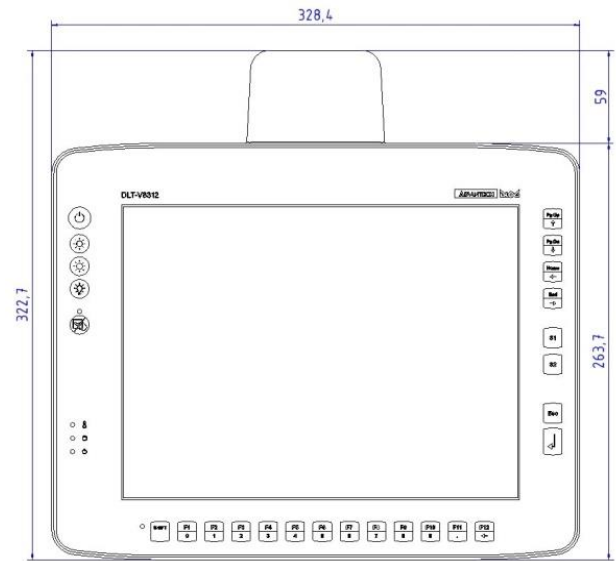
System	CPU Mass storage memory	Intel® Celeron® 2980U Dual Core 1.6 GHz with 4 GB, or 8 GB RAM 4 GB to 128 GB CFast
Housing		Completely sealed, fanless design Coated aluminium
Dimensions/Weight (without antenna)	DLT-V8310 DLT-V8312	Width x height x depth in mm: 289 x 233 x 90 / 4.3 kg Width x height x depth in mm: 328 x 263 x 93 / 5.5 kg
Display	DLT-V8310  DLT-V8312	Color-TFT 10.4", SVGA 800 x 600, 400 cd/m <sup>2</sup> Color-TFT 10.4" XGA 1024 x 768, 400 cd/m <sup>2</sup> Color-TFT 12.1" XGA 1024 x 768, 500 cd/m <sup>2</sup>
Touchscreen		Highest impact capable touchscreens in three variants: - Resistive touchscreen with 5 or 26 keys - Sunlight readable resistive touchscreen with 26 keys - Capacitive multi touch (PCT) with 9 integrated keys
Front keys		5, 9 or 26 front keys
Software	Operating system Emulations (third-party)	MS® Win 10 IoT Enterprise, WE8S, WE 8.1 Ind Pro, WES 7, Win7 Pro, Linux VT100, VT220, IBM 5250, TN 3270, Citrix Client®, Freefloat Access One
Communication	Wi-Fi WWAN LAN WPAN	Wi-Fi IEEE 802.11 a/b/g/n, optional WWAN (GSM, GPRS, EDGE, UMTS, HSPA), optional Ethernet 10/100/1000 MBit/s, optional 2 <sup>nd</sup> Ethernet Bluetooth, optional
Location based services		GPS, optional
Interfaces	Serial USB CAN	2 x RS-232, alternatively 1 x RS-232 and RS-422/485 4 x USB 2.0 (HI-SPEED™), bootable; including 1 x Service USB Optional
Audio/Voice	Sound Kit	Speaker integrated Advantech-DLoG specific Voice Kit, optional
Power supply (internal)		12/24/48 VDC nominal voltages Automatic switch-on/switch-off function via vehicle ignition Uninterruptible power supply (UPS), typically 10 min, optional
Environmental	IP protection class Impact resistance of the front Operating temperature Relative humidity Shock/Vibration	IP66 for the complete system IK08 according to IEC 62262 -30 to +50 °C (-22 to +122 °F) 10 to 90% at 40 °C, non condensing Class 5M3 according to EN 60721-3-5 and US Highway Truck as MIL-STD 810F
Approvals	Certifications	CE Immunity Class A, Emission Class B / FCC Class B, CCC China, MIC Japan

# DLT-V8310/12 Celeron®

## Dimensions (in mm)

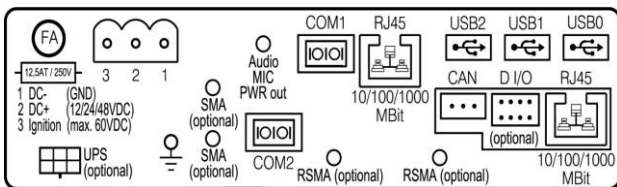


DLT-V8310 model example  
with Wi-Fi/WWAN/GPS Antenna

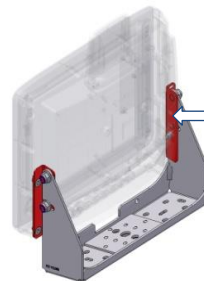
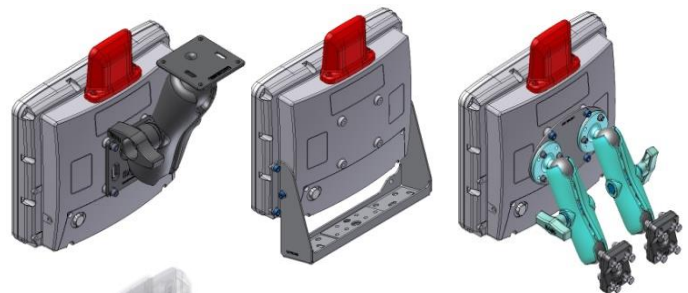


DLT-V8312 model example  
with Wi-Fi/WWAN/GPS Antenna

## Connectors



## Mounting Variants (Selection)



Adapter set for reusing the mounting bracket of the predecessor terminal MPC 6/10.

## Advantech-DLoG Partner Contact

## Accessories/Options

- Scanners and scanner mountings
- Keyboards and keyboard mountings
- Stylus and stylus mountings
- Sun visors
- Terminal mountings (wide range of mounting brackets, RAM solutions etc.)
- USB Stick, USB Recovery Stick
- External CD/DVD ROM drive